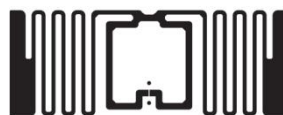


Overview

Frequency Band

860MHz-960MHz



Chip

NXP UCODE8

Antenna Dimensions

16x42mm/0.630x1.654inch

International Standard

ISO/IEC 18000-63 Type C

Applications

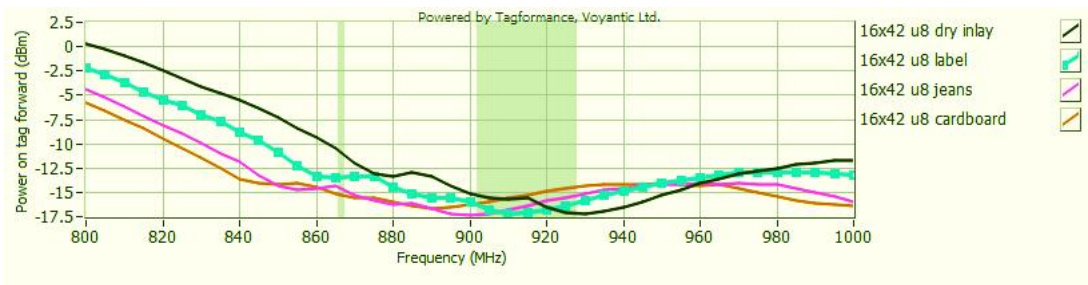
 Warehousing management
 Logistics and Transportation

This antenna is designed for logistics applications. It supports omnidirectional reading, and its high efficiency and excellent performance make it widely used in warehouse management, logistics and transportation fields etc. The deployment of RFID technology in warehouse management and logistics transportation will help monitor the flow direction of products and ensure the safety of cargo transportation.

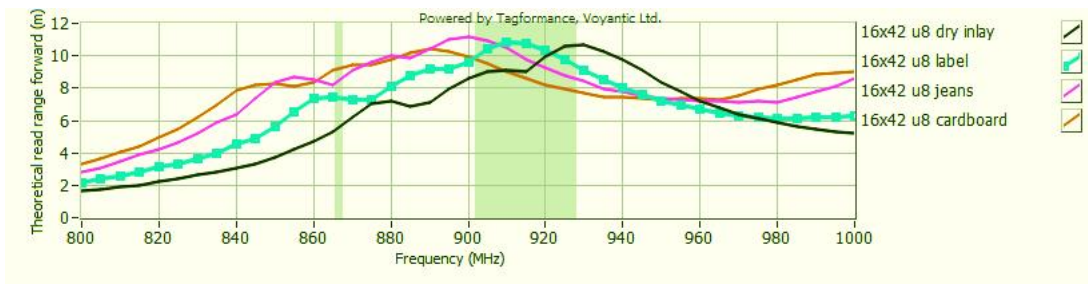
Technical Features

Model	OS31216	OS32110
Delivery Format	Dry Inlay	Wet Inlay
EPC Memory	128Bits	128Bits
User Memory	0Bits	0Bits
Die-cut Dimension	-	46*19mm
Inlay Substrate	50um PET	50um PET
Standard Pitch	21.59mm	21.59mm
Web Width	55mm	55mm
Core Size	76.2mm/3inch	76.2mm/3inch
Quantity / Reel	10000 ± 300Pcs/Reel	5000 ± 2Pcs/Reel
Operating Temperature	-20℃ to +50℃ (20% to 80%RH)	
Remarks	Other size can be customized.	

Sensitivity



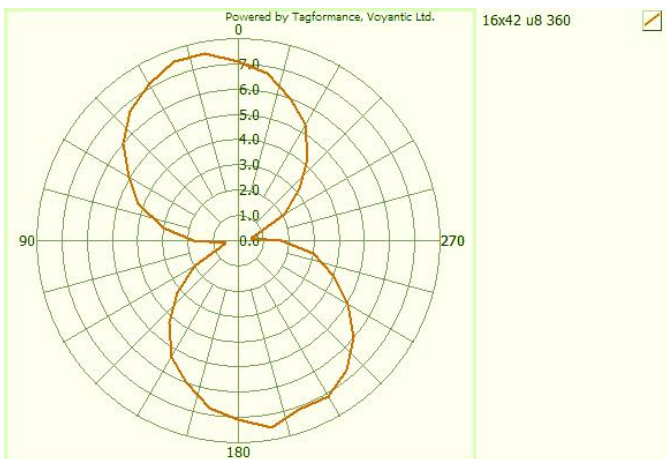
Read Range



Sensitivity&Read Range Test power: 4W EIRP

For countries that allow 2W ERP, please reduce the result by 11%

Orientation sensitivity



All graphs are indicative: performance in real life applications may vary.